



Trends in digital healthcare creating the need for a **Data Utility**

18 September 2023

HASA **2023** Conference
See Possibilities. Collaborate.

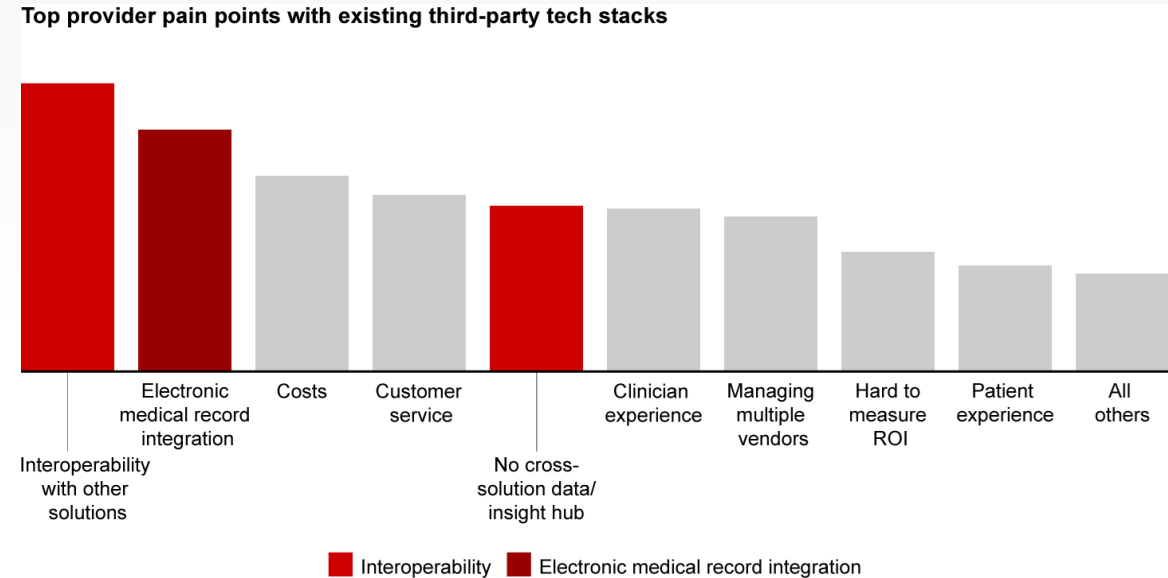
CareConnect 
Health Information Exchange

Digital healthcare investment



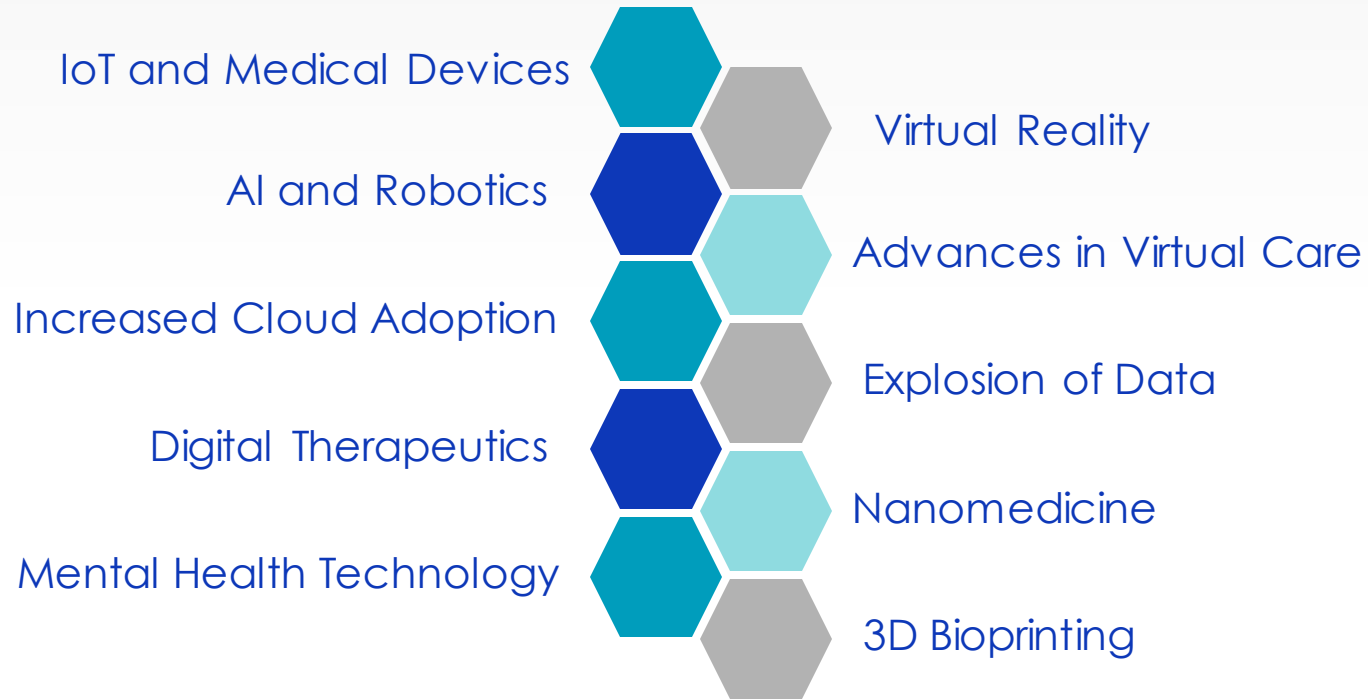
The social determinants of health (SDH) are the non-medical factors that influence health outcomes. They are the conditions in which people are born, grow, work, live, and age, and the wider set of forces and systems shaping the conditions of daily life. These forces and systems include economic policies and systems, development agendas, social norms, social policies and political systems.

Source: WHO



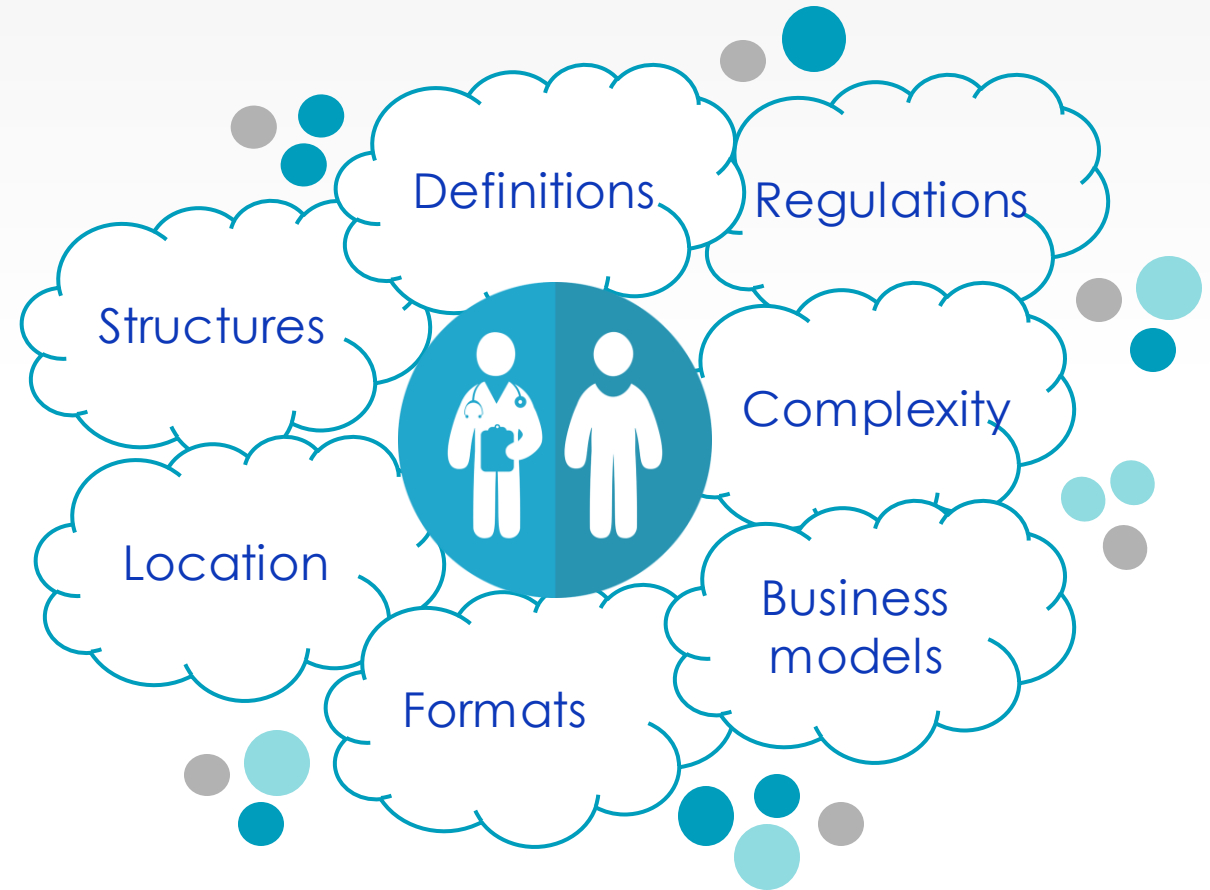
Sources: Provider interviews; Bain-KLAS 2022 Provider Executive Survey (N=289)

Technology trends (and dependencies)



The upside and downside

- Today we have **more information** on our patients than ever before
- A **plethora** of solutions that help solve a range of challenges
- Countless process, people, **fragments** and **siloes** of information **combinations** are possible
- Never has it been so difficult to consolidate, simplify, **access** and **interpret** the information

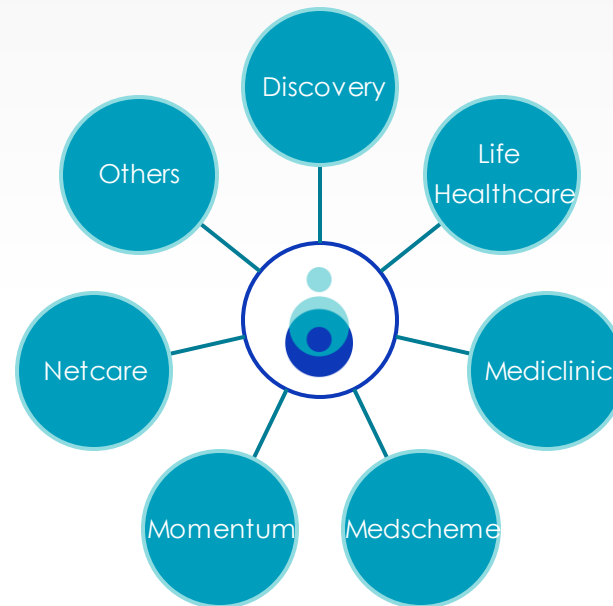


Health Information Exchange (HIE)



“Health Information Exchange (HIE) refers to the electronic sharing and exchange of health-related information among various healthcare organizations, healthcare professionals, patients, and government agencies within a specific geographic region, community, or network.”

“The primary goal of HIE is to improve the efficiency, safety, and quality of healthcare delivery by ensuring that relevant health information is accessible, usable, and securely shared when needed to support patient care.”



±5.1m lives*
(and growing)



±75% consent uptake
(@ hospitals)



5,4m data updates per month
(on average)



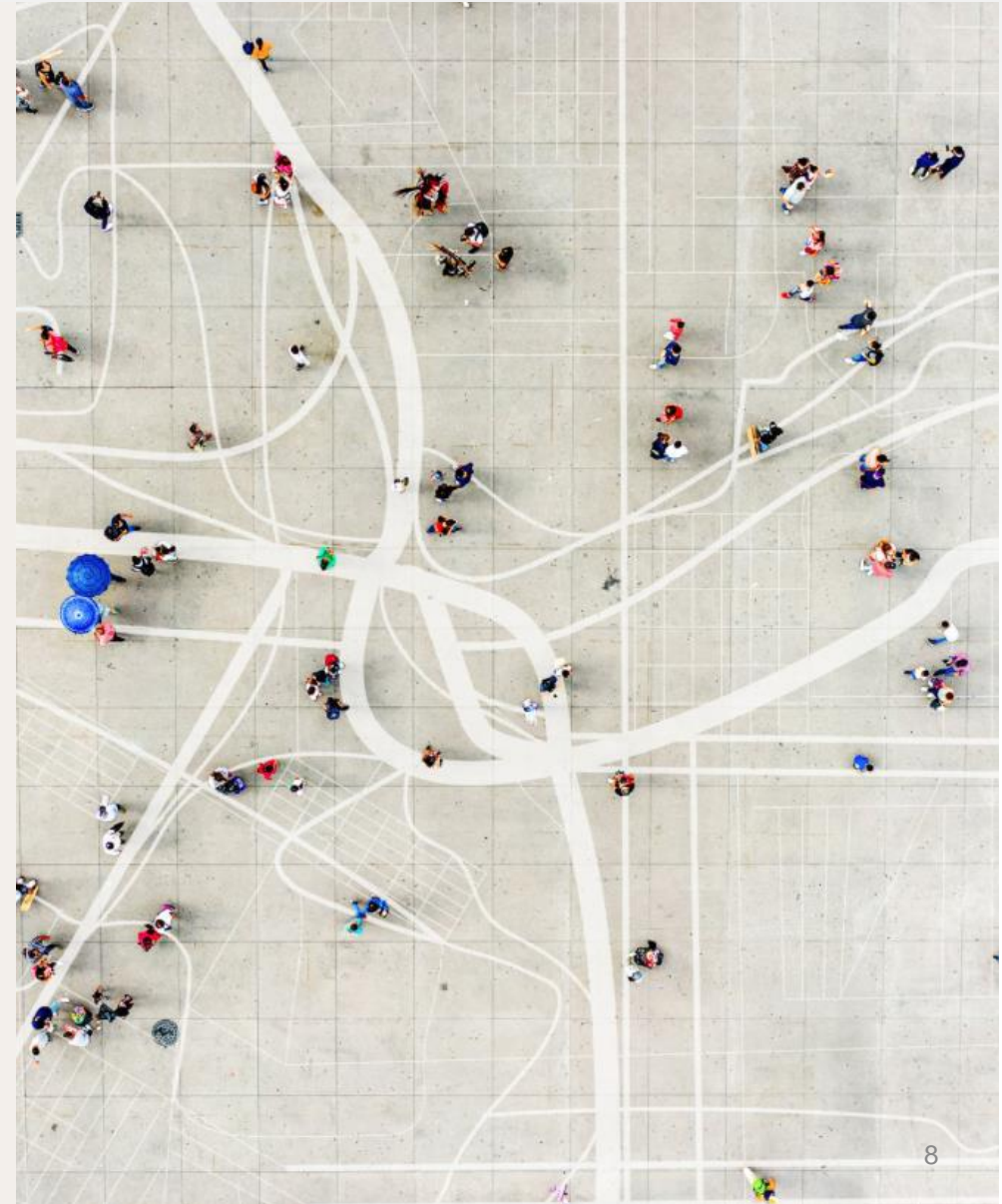
90k data lookups per month
(on average)

Health Data **Utilities**

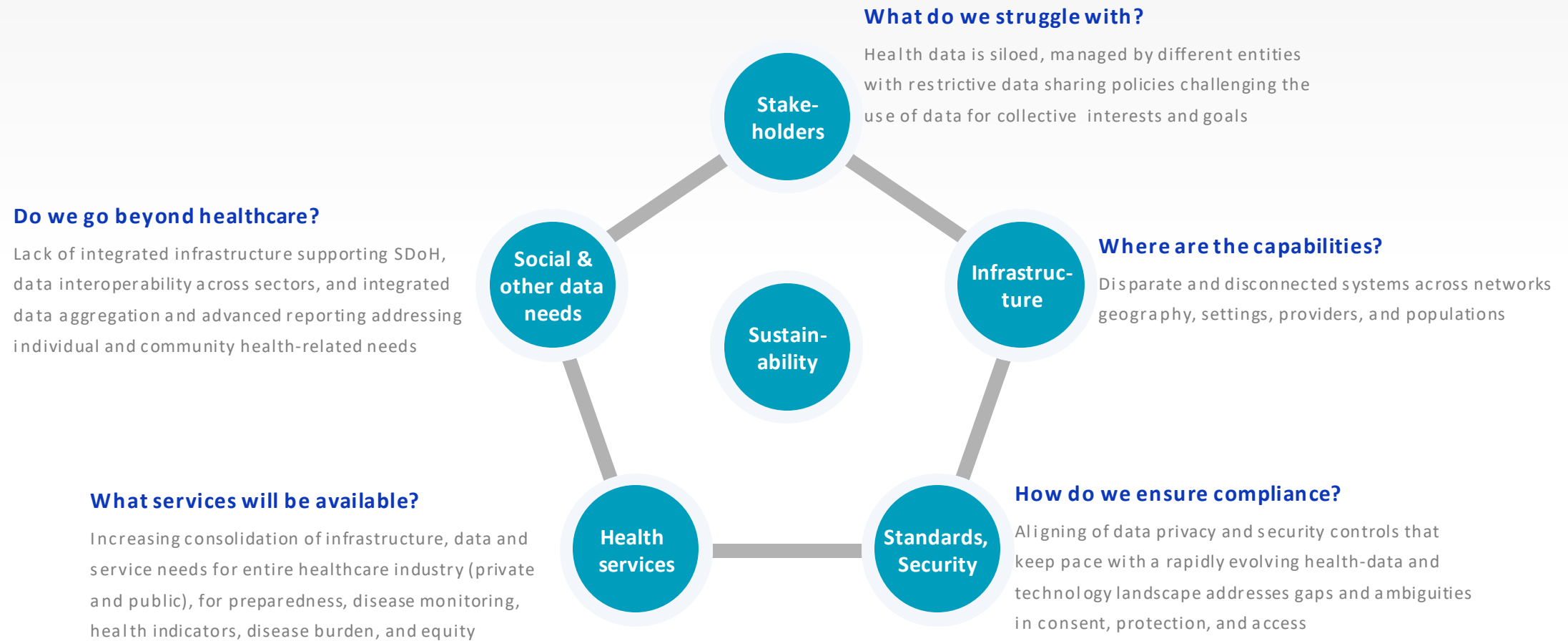
Civitas' Emerging Definition

Health Data Utilities (HDUs) are “statewide” entities that **combine, enhance, and exchange electronic health data** across care and services settings for treatment, care coordination, quality improvement, and public and community health purposes. They enable specific, defined use cases, with extra protections to ensure patient privacy and protection. **They should build on existing technical, organizational, and trust infrastructure in states and regions.**

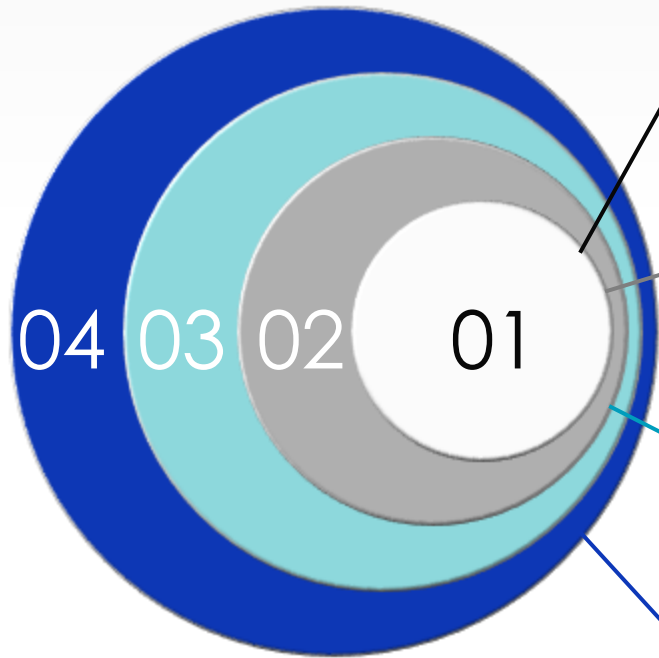
CIVITAS
Networks for Health



Drivers for a HDU (inclu. South Africa)



HDU requires collaborative governance



Private

Organisational level

Business objectives, operations, engagement, specific services, prove value

Scale within the sector

Increase participation of a specific population or sector

Encompass geographic regions

Inclusion of larger populations. Look at geographic priorities

National and countrywide

Coordination, PPP, serving all, policy driven and held accountable via metrics

Public

Community level

Community objectives, operations, engagement, specific services, impact

Scale across the community

Increase participation across diverse communities

Encompass provinces

Inclusion of more geographic communities. Look at geographic priorities

National and countrywide

Coordination, PPP, serving all, policy driven and held accountable via metrics

Where to from here?

Health data sharing

- CareConnect HIE
- Other “ready to connect” local exchanges
- More participants to strengthen community
- Care coordination value propositions
- Governance
- Trust

Health data utility

- Standards are available
- Infrastructure is in place
- Governance needs work at scale of public and private collaboration
- Need more wholistic operational use cases and clinical use cases
- Priority is a long-term sustainability strategy

THANK YOU

The background features a solid teal color. On the right side, there are three overlapping circles of varying shades of blue and teal. The top circle is a light teal, the middle one is a medium teal, and the bottom one is a dark blue. They overlap in a way that creates a sense of depth and movement.