



The Value
Care Team

Primary Healthcare Value-Based Care Population Medicine Pilot Project

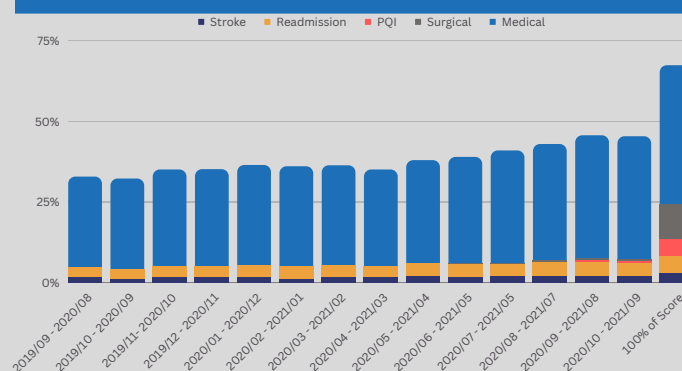
The aim of the pilot project was to enhance coordinated outpatient care:

- Multidisciplinary care within the psychosocial context of each patient aims to improve cost effective quality of care.
- Remuneration is aligned with clinical and economic outcomes which encourages iterative quality improvements and discourages siloed specialist and costly hospital-centric care.

The pilot project was initiated for the GEMS population in September 2019 and lasted until April 2023, when it was converted to a national programme.

- Five GP practices with multiple GPs participated and served a membership of around 6 000 patients.
- Demographic data and claims data of the GEMS population was used to unpack the burden of disease and to segment the population in risk categories for proactive management.
- Care Coordinators were allocated to each practice, to facilitate assessments, intervention, monitoring, disease education etc.
- Physiotherapists, occupational therapists, social workers and a palliative care specialist was available to all enrolled members at no cost.
- Rigorous data analysis was done throughout to measure clinical and financial impact of the model. Challenges were identified, unpacked and processes improved to refine the model.

- The pilot illustrated that improved primary care can reduce inpatient utilisation. Outcomes were convincing enough for GEMS to commission a national roll out of the program.*
- The model was shortlisted for the 2023 European VBHC[1] prize amongst 117 entries. It was also chosen as a case study for publication by the World Health Organisation.



**TVCT Showed marked improvement in
VBC performance measures over time*